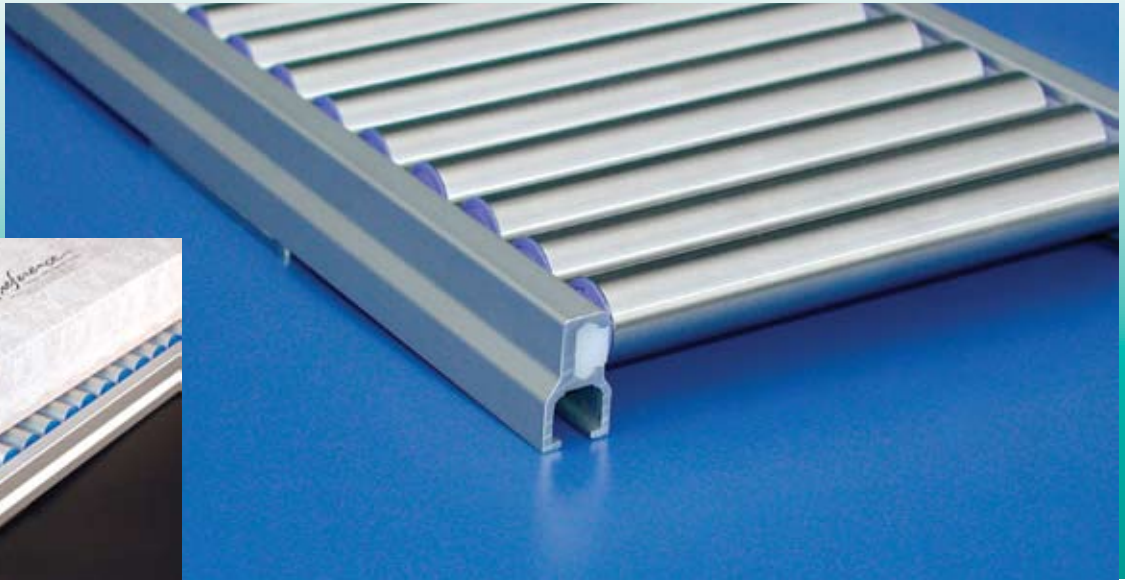


Roll-Tech[™]

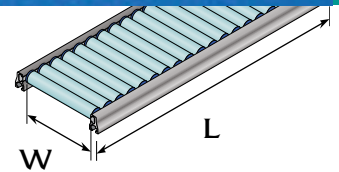
Mini Roller Conveyor Sections

- Perfect for Smaller Containers and Packages
- Fully Assembled, Ready to Mount
- With or Without Side Guides
- Ultra Easy Rolling



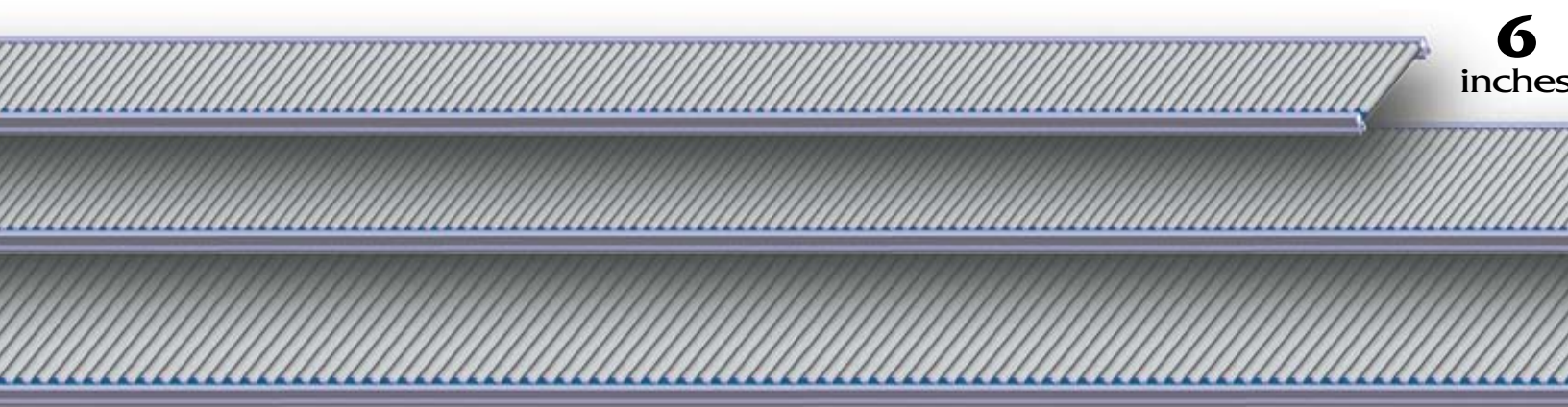


Low Profile Roller Sections



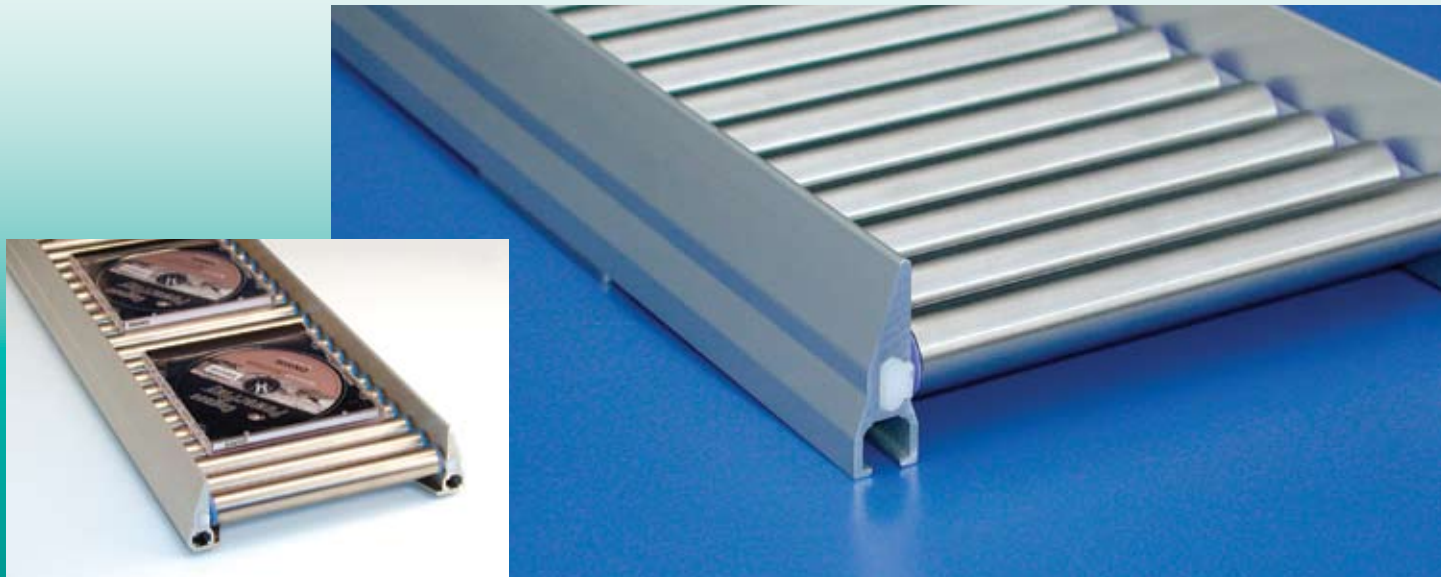
- Low Profile, Sleek Design
- Fully Assembled, Ready to Mount
- 3/4 in. Aluminum or Stainless Rollers
- Anodized Aluminum Side Channels
- Tight Roller Spacing, Minimal Gaps
- Ideal for Small Containers, Packages
- Easy Rolling Ball Bearings

| | Part Number with Open Sides | Roller Width (W) in Inches | Length (L) in Feet |
|--------------------------------|-----------------------------|----------------------------|--------------------|
| Aluminum Rollers | VG-ARB-AL34-BB-6-5 | 6 | 5 |
| | VG-ARB-AL34-BB-6-10 | 6 | 10 |
| | VG-ARB-AL34-BB-9-5 | 9 | 5 |
| | VG-ARB-AL34-BB-9-10 | 9 | 10 |
| | VG-ARB-AL34-BB-12-5 | 12 | 5 |
| | VG-ARB-AL34-BB-12-10 | 12 | 10 |
| Stainless Steel Rollers | VG-ARB-SS34-BB-6-5 | 6 | 5 |
| | VG-ARB-SS34-BB-6-10 | 6 | 10 |
| | VG-ARB-SS34-BB-9-5 | 9 | 5 |
| | VG-ARB-SS34-BB-9-10 | 9 | 10 |
| | VG-ARB-SS34-BB-12-5 | 12 | 5 |
| | VG-ARB-SS34-BB-12-10 | 12 | 10 |

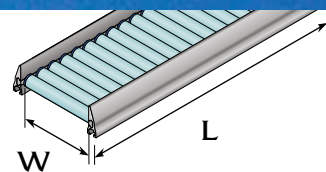


6
inches

, mini roller conveyor to your application.



Integrated Side Guide Roller Sections



The underside of Roll-Tech sections are fitted with solid steel cross members which give strength, rigidity, and adjustable mounting options.

Part Number
with Side Guides

Roller Width
(W) in Inches

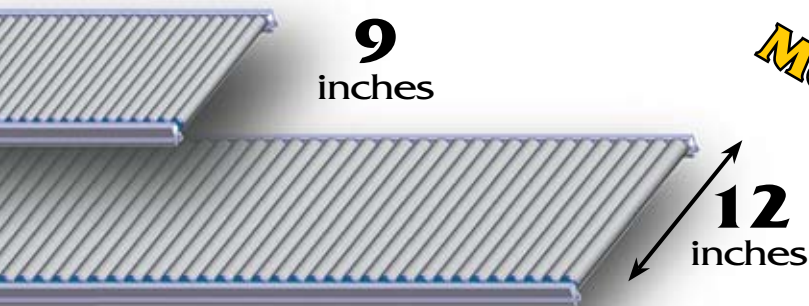
Length (L)
in Feet

Aluminum
Rollers

| | | |
|-----------------------|----|----|
| VG-ASRB-AL34-BB-6-5 | 6 | 5 |
| VG-ASRB-AL34-BB-6-10 | 6 | 10 |
| VG-ASRB-AL34-BB-9-5 | 9 | 5 |
| VG-ASRB-AL34-BB-9-10 | 9 | 10 |
| VG-ASRB-AL34-BB-12-5 | 12 | 5 |
| VG-ASRB-AL34-BB-12-10 | 12 | 10 |

Stainless
Steel Rollers

| | | |
|-----------------------|----|----|
| VG-ASRB-SS34-BB-6-5 | 6 | 5 |
| VG-ASRB-SS34-BB-6-10 | 6 | 10 |
| VG-ASRB-SS34-BB-9-5 | 9 | 5 |
| VG-ASRB-SS34-BB-9-10 | 9 | 10 |
| VG-ASRB-SS34-BB-12-5 | 12 | 5 |
| VG-ASRB-SS34-BB-12-10 | 12 | 10 |



**Simple
Mounting!**



The special mounting slots on each cross member support allow for easy bolt insertion and adjustment.

the makers of



Conveyor Components

Customer Service

Toll free Phone: (866) 765-8744

Solusii

Fax: (866) 447-6587

44 Solus

Office Locations

30152 Aventura
 Rancho Santa Margarita, California 92688
 Phone: (949) 589-3900
 Fax: (949) 858-0300

Indianapolis, Indiana

Sanford, North Carolina

Tlajomulco de Zúñiga, Jalisco, Mexico

www.solusii.com

solusteam@solusii.com

© 2008 Solus Industrial Innovations, LLC

6/08

