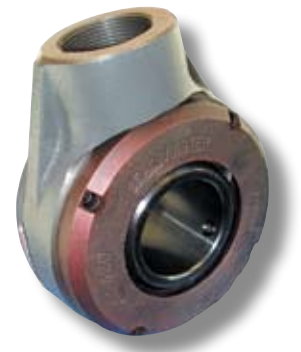


SEALMASTER[®]

Paver Bearings




EMERSON[™]
Industrial Automation

EMERSON. CONSIDER IT SOLVED.[™]

Count on the Original...

SEALMASTER® PAVER BEARINGS



Sealmaster® brand bearings have been synonymous with quality, problem solving and performance. Those same attributes hold true for Sealmaster paver bearings.

For over **fifty years**, Sealmaster has been a well-known and well-respected name in the paving industry. Sealmaster has been involved in close partnership with **paver original equipment manufacturers** and Sealmaster engineers have worked with these manufacturers to design bearings to help endure the harsh environments of the paving industry.

As asphalt paving technology has evolved, so have the performance requirements of paving equipment. Sealmaster has and will continue to incorporate the most **innovative materials and technologies** into our paver bearings.

Once available only to the manufacturers of paving equipment, Sealmaster brand paver bearings are now being sold through your local industrial distributor and select paver wear parts suppliers, **making the bearings more available than ever.**

Original SEALMASTER® Paver Bearings

Paver Manufacturer	Model	Manufacturer Part Number	Sealmaster Part Number	Bearing Description	Location on Paver
Global*/Allatt**/Champion**	Various	13031950	PVR-3840	Take up	Conveyor
Global*/Allatt**/Champion**	Various	13031943	PVR-3841	Take up	Conveyor
Global*/Allatt**/Champion**	Various	13031919	PVR-3142+	Piloted Flange	Auger Inner
Global*/Allatt**/Champion**	Various	13031091	PVR-3243◆	Hanger	Auger Outer
Global*/Allatt**/Champion**	Various	13117833	PVR-3144	Piloted Flange	Auger Inner
Global*/Allatt**/Champion**	Various	13054846	PVR-3245	Hanger	Auger Outer
Global*/Allatt**/Champion**	575T	13116702	PVR-3546	4 Bolt Flange	Conveyor
Global*/Allatt**/Champion**	575T	13131974	PVR-3647	2 Bolt Flange	Auger
Global*/Allatt**/Champion**	575T	13038591	PVR-3648	2 Bolt Flange	Auger
Global*/Allatt**/Champion**	Various	13031927	PVR-3149	Piloted Flange	Auger Inner
Global*/Allatt**/Champion**	Various	13031091	PVR-3250	Hanger	Auger Outer
Global*/Allatt**/Champion**	Various	13031919, 1311783	PVR-3151	Piloted Flange	Auger Inner
Blaw Knox***	PF-400A	116-112, 05005-042	PVR-1711	AR Style	Auger Box
Blaw Knox***	Various	116-099, 05005-041	PVR-1710	AR Style	Auger Box
Blaw Knox***	PF-150/1 50H	116-118	PVR-1626	2 Bolt Flange	Auger Outer
Blaw Knox***	PF-172/172B	116-119, 116-026	PVR-1314	Pillow Block	Screed
Blaw Knox***	Various	116-011, 116-083	PVR-1325	Pillow Block	Screed
Blaw Knox***	PF-115	116-036	PVR-1624	2 Bolt Flange	Auger/Conveyor Drive
Blaw Knox***	PF-180/180H/180X	116-051	PVR-1612	2 Bolt Flange	Auger/Conveyor Drive
Blaw Knox***	Various	116-093	PVR-1723	SC Cartridge	Auger Box
Blaw Knox***	Various	116-092	PVR-1522	4 Bolt Flange	Chain Box
Blaw Knox***	PF-115, PF-120H, PF-500	116-015, 116-034, 116-103	PVR-1504	4 Bolt Flange	Conveyor/Screed
Blaw Knox***	PF-161, PF-180H	116-131	PVR-1113	Piloted Flange	Conveyor Drive Screed
Blaw Knox***	PF-161, PF-410, PF-3172, PF-3180, PF-3200, PF-4410, PF-5500, PF-5510	116-139	PVR-1106	Piloted Flange	Conveyor Outer Rear
Blaw Knox***	PF-161, PF-172/172B, PF-180/180X, PF-200/200B, PF-410, PF-500, PF-510, PF-3172, PF-3180, PF-3200, PF-4410, PF-5500, PF-5510	116-114	PVR-1229●	Hanger	Auger Outer
Blaw Knox***	PF-161, PF-172/172B, PF-180/180X, PF-200/200B, PF-410, PF-500, PF-510, PF-3172, PF-3180, PF-3200, PF-4410, PF-5500, PF-5510	116-123, 116-127, 116-129, 116-141	PVR-1203	Hanger	Auger Outer
Blaw Knox***	PF-200/200B, PF-172/172B, PF-161, PF-410, PF-500, PF-510, PF-3172, PF-3180, PF-4410, PF-5500, PF-5510	116-113, 116-128, 116-130, 116-143	PVR-1128*	Piloted Flange	Auger Inner/Conveyor Rear Inner
Blaw Knox***	PF-200/200B, PF-172/172B, PF-161, PF-410, PF-500, PF-510, PF-3172, PF-3180, PF-4410, PF-5500, PF-5510	116-142	PVR-1102	Piloted Flange	Auger Inner/Conveyor Rear Inner
Blaw Knox***	PF-3200, PF-3180, PF-3172	116-144	PVR-1121	Piloted Flange	Auger Inner-Power Flight Auger
Blaw Knox***	PF-115, PF-120H, PF-161, PF-172/172B, PF-180/180X, PF-200/200B, PF-410, PF-510, PF-3180, PF-3200, PF-4410, PF-5500, PF-5510	116-035, 116-070, 116-071, 116-072, 116-133, 116-137, 116-138	PVR-1501	4 Bolt Flange	Conveyor
Blaw Knox***	PF-150/150H	116-117	PVR-1720	SC Cartridge	Auger Inner/Conveyor Drive
Blaw Knox***	Various	115-328, 116-094	PVR-1219	Hanger	Auger Outer
Blaw Knox***	Various	116-068, 116-109	PVR-1518	4 Bolt Flange	Auger
Blaw Knox***	PF-115	116-063	PVR-1509	4 Bolt Flange	Conveyor

- * For design upgrade use PVR-1102
- For design upgrade use PVR-1203
- ▲ For design upgrade use PVR-2137

- For design upgrade use PVR-2436
- ★ For design upgrade use PVR-2538
- ♥ For design upgrade use PVR-2539 replaces PVR-2534

- ◆ For design upgrade use PVR-3250
- ✚ For design upgrade use PVR-3151

* Global is a trademark, tradename, or other indicator of Vogele America, Inc., a division of Wirtgen America, Inc.

** Allatt/Champion are trademarks, tradenames, or other indicators of Volvo Construction equipment (Volvo CE).

*** Blaw Knox is a trademark of Blaw Knox Construction Corporation.

These trade names, trademarks and/or registered trademarks of others are used herein for product comparison purposes only, are the property of their respective owners and are not owned or controlled by Emerson Power Transmission Corporation. Emerson Power Transmission does not represent or warrant the accuracy of this document.

Paver Manufacturer	Model	Manufacturer Part Number	Sealmaster Part Number	Bearing Description	Location on Paver
Blaw Knox*	PF-180/180H	116-032,116-041	PVR-1507	4 Bolt Flange	Conveyor
Blaw Knox*	PF-115, PF120H, PF-161, PF-180/180X	116-033	PVR-1127	Piloted Flange	Conveyor
Blaw Knox*	PF-180H, PF-120	116-031,116-090	PVR-1608	2 Bolt Flange	Auger/Conveyor Drive
Blaw Knox*	Various	116-069	PVR-1605	2 Bolt Flange	Auger
Blaw Knox*	PF-115, PF-400A	116-064,116-122	PVR-1615	2 Bolt Flange	Auger
Blaw Knox*	Various	116-145	PVR-1416	Tapped Base	Screed
Blaw Knox*	PF-150/150H	116-067	PVR-1417	Tapped Base	Conveyor Front
Blaw Knox*	Various	116-098, 05005-021	PVR-1450	Tapped Base	Conveyor
Blaw Knox*	Various	116-091	PVR-1551	4 Bolt Flange	Conveyor
Blaw Knox*	Road Wideners	116-095	MSF-28	4 Bolt Flange	Conveyor
Blaw Knox*	Road Wideners	116-084	MSF-24	4 Bolt Flange	Conveyor
Blaw Knox*	Most	115-021	ER-23	ER Style	Push Roller
Blaw Knox*	Various	05005-019, 05005-020	MP-32	Pillow Block	Screed
Cedarapids**	Various	45134-010-37	PVR-2431■	Tapped Base	Auger Inner
Cedarapids**	Various	45134-010-41	PVR-2130▲	Piloted Flange	Auger Inner
Cedarapids**	Various	45134-010-39	PVR-2432	Tapped Base	Auger Remix
Cedarapids**	Various	45134-010-47, F0203-FGA	PVR-2533★	4 Bolt Flange	Conveyor
Cedarapids**	CR-351, CR-451, CR-461, CR-551,CR-561	45134-010-40	PVR-2535♥	4 Bolt Flange	Conveyor
Cedarapids**	Various	45134-010-37	PVR-2436	Tapped Base	Auger Outer
Cedarapids**	Various	45134-010-41	PVR-2137	Piloted Flange	Auger Inner
Cedarapids**	Various	45134-010-47, F0203FGA	PVR-2538	4 Bolt Flange	Conveyor
Cedarapids**	CR-351, CR-451, CR-461, CR-551,CR-561	45134-010-40, F011 5-FGA	PVR-2539	4 Bolt Flange	Conveyor
Cedarapids**	Various	F0107-PGA	NP-23 HT	Pillow Block	Screed

* For design upgrade use PVR-1102

● For design upgrade use PVR-1203

▲ For design upgrade use PVR-2137

■ For design upgrade use PVR-2436

★ For design upgrade use PVR-2538

♥ For design upgrade use PVR-2539 replaces PVR-2534

◆ For design upgrade use PVR-3250

✚ For design upgrade use PVR-3151

Nomenclature

Sealmaster Brand Paver Bearing

Paver Brand

1 = Blaw Knox*

2 = Cedarapids**

3 = Global***/Allatt****/Champion****

Housing Style

1 = Piloted Flange

2 = Hanger

3 = Pillow Block

4 = Tapped Base

5 = 4-Bolt Flange

6 = 2-Bolt Flange

7 = SC Cartridge/AR Style

8 = Take-Up

Paver Bearing Part Number

01-99

PVR-XXXX



Hanger



Cartridge



Pillow Block



Tapped Base



4 Bolt



2 Bolt

* Blaw Knox is a trademark of Blaw Knox Construction Corporation.

** Cedarapids is a trademark of Cedarapids, Inc.

*** Global is a trademark, tradename, or other indicator of Vogele America, Inc., a division of Wirtgen America, Inc.

**** Allatt/Champion are trademarks, tradenames, or other indicators of Volvo Construction equipment (Volvo CE).

These trade names, trademarks and/or registered trademarks of others are used herein for product comparison purposes only, are the property of their respective owners and are not owned or controlled by Emerson Power Transmission Corporation. Emerson Power Transmission does not represent or warrant the accuracy of this document.

Paver Bearing Features

PAVER BEARING SEAL TECHNOLOGY (U.S. Patent No. 5,121,999)

The key to the high performance, Sealmaster brand paver bearings is the series of four barriers (end cap, shield, washer, seal) used to help protect the bearing's inner components from contaminants.

Self-Adjusting Washer

A conical-shaped mechanical seal is located directly behind the rotating shield supplying the bearing with a third contamination barrier. The stainless steel washer attaches to the bearing's inner ring. As small asphalt particles wear it down, the spring-loaded washer adjusts, extending seal life.

Rotating Shield

Acting as a second barrier to contaminants is a conical-shaped shield. The ductile iron, black oxide shield is fixed to an extended inner race and precision-machined to run close clearance with the end cap. The shield resists asphalt erosion and helps protect the inner sealing elements from large aggregate damage. The inside face of the shield also provides a precision, labyrinth seal with the outer race.

High Temperature Seals

The fourth and final barrier consists of the Nomex* felt seal, which works to help filter out fine and super fine particles. These Nomex* seals are able to withstand the sustained temperatures of the asphalt mix.

Ductile Iron End Cap

A tough, wear-resistant end cap helps keep asphalt from forcing its way into the bearing. The ductile iron, bolt-on end cap mates with the casting providing the first barrier against abrasive asphalt.

Heavy-Duty Housing

Each bearing is designed with a heavy-duty housing to help withstand long-term exposure to asphalt.

Factory-Specified Lubrication

Factory lubrication for each bearing is chosen to best fit the conditions of bearing operation. For example, auger bearings use a high-temperature synthetic grease to help combat the high asphalt temperatures.

High Strength Retainer

The retainer has a high-strength, brass construction to help withstand harsh environments and high temperatures. The brass retainer is land-riding, which helps increase lubricity and allows for maximum grease chamber volume.

Bearing components are dependent on applications. Please contact Sealmaster at (219)465-2211 or sealmaster.engineering@emerson-ept.com for technical and application assistance.

*Nomex is a trademark of E.I. du Pont de Nemours and Company.

This trade name, trademark and/or registered trademark of others is used herein for product comparison purposes only, is the property of its respective owners and is not owned or controlled by Emerson Power Transmission Corporation. Emerson Power Transmission does not represent or warrant the accuracy of this document.

Paver Bearing Environments



Today's new asphalt materials cause bearings to be exposed to temperatures in excess of 350° F. These high temperatures can cause bearing seals to melt, char and breakdown, along with damaging the inner components of the bearing.

The abrasive conditions to which paver bearings are exposed can severely damage rubber lip seals. Plus, abrasive aggregate can erode metal seal components.



Asphalt mix can solidify on bearing seals and races when machines are shut down. Upon start-up, seals can be torn off of the bearing due to the solidified asphalt. This leaves the bearing exposed to contaminants and incapable of containing the lubricant.



Taking all these conditions into account, Sealmaster engineers have over 50 years of design, test and application experience directed toward providing performance solutions for the demanding conditions of the paving industry.

www.emerson-ept.com
Connect Here To Be Part of Something Bigger

Emerson Power Transmission
909 N. Lafayette Street, Valparaiso, IN 46383

Sealmaster Application Engineering and
Mounted Bearing Technical Services - (219) 465-2211

Emerson Power Transmission Customer Service - (800) 626-2120

APPLICATION CONSIDERATIONS

The proper selection and application of power transmission products and components, including the related area of product safety, is the responsibility of the customer. Operating and performance requirements and potential associated issues will vary appreciably depending upon the use and application of such products and components. The scope of the technical and application information included in this publication is necessarily limited. Unusual operating environments and conditions, lubrication requirements, loading supports, and other factors can materially affect the application and operating results of the products and components and the customer should carefully review its requirements. Any technical advice or review furnished by Emerson Power Transmission Corporation and its divisions with respect to the use of products and components is given in good faith and without charge, and Emerson assumes no obligation or liability for the advice given, or results obtained, all such advice and review being given and accepted at customer's risk.

For a copy of our Standard Terms and Conditions of Sale, Disclaimers of Warranty, Limitation of Liability and Remedy, please contact Emerson Power Transmission Customer Service at 1-800-626-2120. These terms and conditions of sale, disclaimers and limitations of liability apply to any person who may buy, acquire or use an Emerson Power Transmission Corporation product referred to herein, including any person who buys from a licensed distributor of these branded products.